

Aluminum Solid Rivet

B-1.....General Description

B-2, 3.....Solid Rivet Spec Sheet

B-4, 5, 6.....Pieces Per Pound



Aluminum Solid Rivet

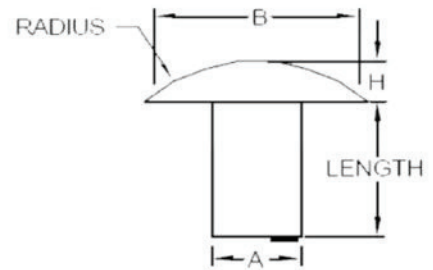
Solid Aluminum Rivets also known as Buck Rivets have been used for many years as a reliable and effective fastener for trailer walls. The most common head styles used in trailer manufacturing are Brazier Head, Modified Brazier Head and Universal Head. The following information shows all the head styles and their dimensions.

We have put together the information on the following pages to help you select the correct solid rivet for your needs

Aluminum Solid Rivet

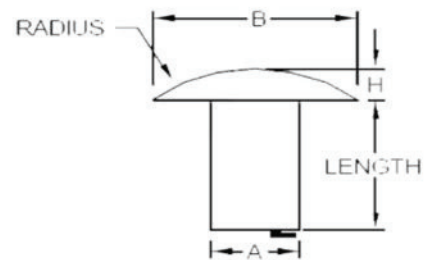
Brazier Head AN455

A	B	H
3/32	.234	.047
1/8	.312	.062
5/32	.391	.078
3/16	.469	.094
1/4	.625	.125
5/16	.781	.156
3/8	.937	.187



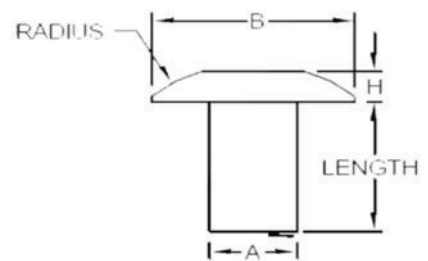
Modified Brazier Head AN456

A	B	H
3/32	.156	.031
1/8	.235	.047
5/32	.312	.063
3/16	.390	.078
1/4	.468	.094
5/16	.625	.125
3/8	.781	.156



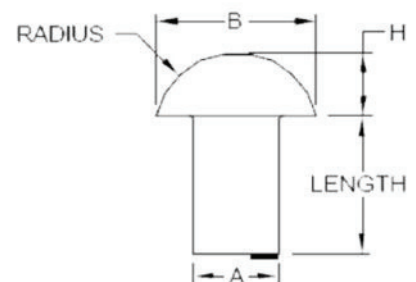
Universal Head MS20470

A	B	H
3/32	.187	.045
1/8	.250	.059
5/32	.312	.072
3/16	.375	.085
1/4	.500	.112
5/16	.625	.138
3/8	.750	.166



Round Head AN430

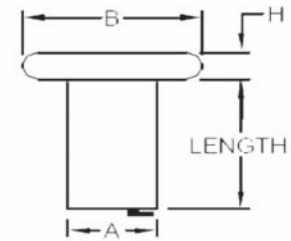
A	B	H
3/32	.187	.070
1/8	.250	.094
5/32	.312	.117
3/16	.375	.141
1/4	.500	.188
5/16	.625	.234
3/8	.750	.281



Aluminum Solid Rivet

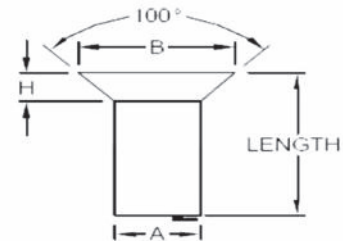
Flat Head AN442

D	A	H
3/32	.187	.038
1/8	.250	.050
5/32	.312	.062
3/16	.375	.075
1/4	.500	.100
5/16	.625	.125
3/8	.750	.150



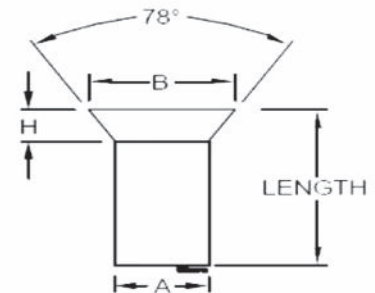
Countersunk Head 100 degree MS20426

A	B	H
3/32	.170	.036
1/8	.216	.042
5/32	.278	.055
3/16	.344	.070
1/4	.467	.095
5/16	.555	.106
3/8	.685	.134



Countersunk Head 78 degree AN425

D	A	H
3/32	.170	.047
1/8	.225	.065
5/32	.282	.078
3/16	.339	.094
1/4	.452	.125
5/16	.565	.156
3/8	.678	.187



Material Stock: 2117 T4, 1100 F
 Material available: 6053 T61, 300 series SS

Solid rivet hole / drill size.

Rivet diameter	3/16	1/4	5/16	3/8
Drill size	#11	#F	#P	#W

Drill Size Values shown are a guide only and may vary depending upon the application.

Aluminum solid rivets are sold by the pound. You can use the chart on the following pages to help you convert pounds to pieces.

Pieces per Pound Conversion

(Reference only)

BRAZIER HEAD Aluminum
AN455

Diameter	Length	Pieces	Diameter	Length	Pieces
3/16	X	3/16 = 705 per lb	1/4	X	1/4 = 298 per lb
		7/32 = 664 per lb			5/16 = 273 per lb
		1/4 = 628 per lb			3/8 = 252 per lb
		5/16 = 566 per lb			7/16 = 232 per lb
		3/8 = 515 per lb			1/2 = 218 per lb
		7/16 = 472 per lb			9/16 = 204 per lb
		1/2 = 436 per lb			5/8 = 192 per lb
		9/16 = 406 per lb			11/16 = 181 per lb
		5/8 = 379 per lb			3/4 = 172 per lb
		11/16 = 355 per lb			13/16 = 163 per lb
		3/4 = 334 per lb			7/8 = 155 per lb
		13/16 = 316 per lb			15/16 = 148 per lb
		7/8 = 299 per lb			1 = 141 per lb
		15/16 = 285 per lb			1 1/8 = 130 per lb
1 = 271 per lb	1 1/4 = 120 per lb				
Diameter	Length	Pieces	Diameter	Length	Pieces
5/16	X	5/16 = 153 per lb	3/8	X	3/8 = 88 per lb
		3/8 = 142 per lb			7/16 = 83 per lb
		7/16 = 133 per lb			1/2 = 78 per lb
		1/2 = 125 per lb			9/16 = 74 per lb
		9/16 = 118 per lb			5/8 = 71 per lb
		5/8 = 111 per lb			11/16 = 67 per lb
		11/16 = 106 per lb			3/4 = 64 per lb
		3/4 = 101 per lb			13/16 = 61 per lb
		13/16 = 96 per lb			7/8 = 59 per lb
		7/8 = 92 per lb			15/16 = 56 per lb
		15/16 = 88 per lb			1 = 54 per lb
		1 = 85 per lb			1 1/8 = 50 per lb
		1 1/8 = 78 per lb			1 1/4 = 47 per lb
		1 1/4 = 72 per lb			1 3/8 = 43 per lb
1 3/8 = 67 per lb	1 1/2 = 41 per lb				

Pieces per Pound Conversion

(Reference only)

MODIFIED BRAZIER HEAD Aluminum
AN456

Diameter	Length	Pieces	Diameter	Length	Pieces
3/16	X	3/16 = 960 per lb	1/4	X	1/4 = 464 per lb
		7/32 = 886 per lb			5/16 = 406 per lb
		1/4 = 823 per lb			3/8 = 361 per lb
		5/16 = 720 per lb			7/16 = 324 per lb
		3/8 = 640 per lb			1/2 = 295 per lb
		7/16 = 576 per lb			9/16 = 270 per lb
		1/2 = 524 per lb			5/8 = 249 per lb
		9/16 = 480 per lb			11/16 = 231 per lb
		5/8 = 443 per lb			3/4 = 216 per lb
		11/16 = 412 per lb			13/16 = 202 per lb
		3/4 = 384 per lb			7/8 = 190 per lb
		13/16 = 360 per lb			15/16 = 180 per lb
		7/8 = 339 per lb			1 = 170 per lb
		15/16 = 320 per lb			1 1/8 = 154 per lb
1 = 303 per lb	1 1/4 = 141 per lb				
5/16	X	5/16 = 221 per lb	3/8	X	3/8 = 221 per lb
		3/8 = 199 per lb			7/16 = 199 per lb
		7/16 = 182 per lb			1/2 = 182 per lb
		1/2 = 167 per lb			9/16 = 167 per lb
		9/16 = 155 per lb			5/8 = 155 per lb
		5/8 = 144 per lb			11/16 = 144 per lb
		11/16 = 135 per lb			3/4 = 135 per lb
		3/4 = 126 per lb			13/16 = 126 per lb
		13/16 = 119 per lb			7/8 = 119 per lb
		7/8 = 112 per lb			15/16 = 112 per lb
		15/16 = 107 per lb			1 = 107 per lb
		1 = 102 per lb			1 1/8 = 102 per lb
		1 1/8 = 93 per lb			1 1/4 = 93 per lb
		1 1/4 = 85 per lb			1 3/8 = 85 per lb
1 3/8 = 79 per lb	1 1/2 = 79 per lb				

Pieces per Pound Conversion

(Reference only)

UNIVERSAL HEAD Aluminum

MS20470

Diameter	Length	Pieces	Diameter	Length	Pieces
3/16	X	3/16 = 843 per lb	1/4	X	1/4 = 419 per lb
		7/32 = 789 per lb			5/16 = 370 per lb
		1/4 = 740 per lb			3/8 = 326 per lb
		5/16 = 659 per lb			7/16 = 295 per lb
		3/8 = 592 per lb			1/2 = 263 per lb
		7/16 = 538 per lb			9/16 = 240 per lb
		1/2 = 492 per lb			5/8 = 220 per lb
		9/16 = 448 per lb			11/16 = 200 per lb
		5/8 = 417 per lb			3/4 = 187 per lb
		11/16 = 386 per lb			13/16 = 173 per lb
		3/4 = 361 per lb			7/8 = 161 per lb
		13/16 = 339 per lb			15/16 = 150 per lb
		7/8 = 320 per lb			1 = 140 per lb
		15/16 = 301 per lb			1 1/8 = 135 per lb
1 = 286 per lb	1 1/4 = 125 per lb				
Diameter	Length	Pieces	Diameter	Length	Pieces
5/16	X	5/16 = 200 per lb	3/8	X	3/8 = 101 per lb
		3/8 = 180 per lb			7/16 = 89 per lb
		7/16 = 160 per lb			1/2 = 84 per lb
		1/2 = 144 per lb			9/16 = 79 per lb
		9/16 = 135 per lb			5/8 = 75 per lb
		5/8 = 122 per lb			11/16 = 72 per lb
		11/16 = 118 per lb			3/4 = 68 per lb
		3/4 = 108 per lb			13/16 = 65 per lb
		13/16 = 100 per lb			7/8 = 62 per lb
		7/8 = 97 per lb			15/16 = 60 per lb
		15/16 = 93 per lb			1 = 58 per lb
		1 = 86 per lb			1 1/8 = 54 per lb
		1 1/8 = 81 per lb			1 1/4 = 50 per lb
		1 1/4 = 72 per lb			1 3/8 = 47 per lb
1 3/8 = 65 per lb	1 1/2 = 45 per lb				